

Madelyn
CO.

KEEPSAKE PENDANTS



*The opportunity to choose a Keepsake Pendant presents itself only once.
The comfort a Keepsake Pendant offers, lasts a lifetime.*

New Additions to the Keepsake Pendant Collection

The Originators of the Keepsake Pendant Our Story of Inspiration

In March of 1992, our family lost a wonderful, spirited friend and mother. Her views on life were inspirational: "Love the moment" and "Death is the greatest adventure of all."



Madelyn
3/14/25 - 3/25/92

Still, in the months that followed, we sought another source of comfort and strength.

From Madelyn Saxer's zest for living and her ability to embrace death, the concept of the Keepsake Pendant was born. A symbol of continuing love . . . a reassuring remembrance to keep close to one's heart.

In creating our pendant line, we had a simple purpose: to enable others to cope more easily, to hold a source of comfort in their hands and to find peace in their hearts.

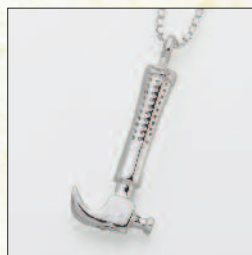
Our Keepsake Pendants bring memories to an even more personal level by holding a small portion of cremated remains, a lock of hair or dried ceremonial flowers. The pendants may be worn or displayed in a glass dome.

This brochure shows the pendant styles in beautiful detail.

The opportunity to choose a Keepsake Pendant presents itself only once. The comfort a Keepsake Pendant offers, lasts a lifetime.

Sincerely,

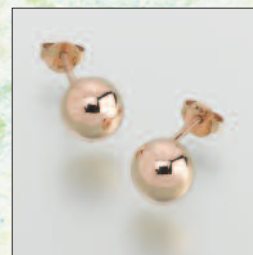
Lisa Saxer Bruer
Geri B. Cullen



#230SS Hammer - \$220
#230YG Hammer - Call
Head 5/8" W x 1-3/16" Long
Handle 3/16" Deep

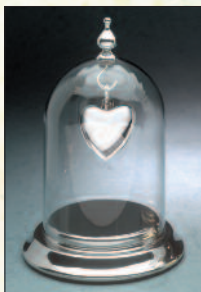


#231SS Sun, Moon, Star - \$250
#231YG Sun, Moon, Star - Call
3/4" Diameter x 1/4" Deep

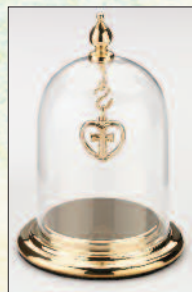


#233SS Ball Earring (single) - \$90
#233SS Ball Earrings (pair) - \$180
#233YG Ball Earrings - Call
8mm Diameter

Keepsake Pendant Display Domes



#137PT Blown Glass Dome,
Pewter Base - \$160
#137PT-T Top Only - \$80
4" round x 6" high
(Pendant sold separately)



#137GV Blown Glass Dome,
Gold Overlay Base - \$180
#137GV-T Top Only - \$80
4" round x 6" high
(Pendant sold separately)



#138GV Fillable Base w/ Glass Dome Top - \$240
#138PT Fillable Base w/ Glass Dome Top - \$200
4" round x 6" high
(Pendant sold separately)

Madelyn Keepsake Pendant Product Reference Key

Madelyn Keepsake Pendant products are created by using a variety of precious and semi-precious metals. To assist with the product selection process, the following metal abbreviations can be found as the last letters of the product number under each product photograph.

- | | |
|--|--|
| BR - Brass (Does not contain nickel) | SS-A - Antiqued Sterling Silver |
| BZ - Bronze (Does not contain nickel) | SS-C - Chromate Sterling Silver |
| GF - Gold-Filled | ST - Stainless Steel |
| GV - Gold Vermeil (23K Gold-plating over Sterling, (Does not contain nickel) | TT - Titanium |
| PT - Pewter | WB - White Bronze (Does not contain nickel) |
| SK - Sterling Silver w/ 14K Gold Insert | WG - 14K White Gold |
| SS - Sterling Silver (Does not contain nickel) | YG - 14K Yellow Gold (Does not contain nickel) |

** Double-Chamber Pendant Options:

- | | |
|--------------------------------|---------------------------|
| #169SS Sliding Heart - \$186 | #170GV Cylinder - \$198 |
| #169YG/WG Sliding Heart - Call | #170SS Cylinder - \$176 |
| | #170YG/WG Cylinder - Call |

All listed prices are RETAIL.

All items pictured are NOT actual size.
Measurements do not include the bales.

Refer to photographs and dimensions of products on page 6
#117 Cylinder, #130 Sliding Heart.

24-inch satin cord included with all orders.

ENGRAVING OPTIONS

Most Keepsake Pendants are engraveable. Set-up cost is \$15 per side. Multiple pendants with same engraving no additional fee.

Maggie May
12-30-1947

Block - \$3 per character

Stephen Charles
5-16-2004

Script - \$4 per character

Keepsake Pendants Nature Inspired Collection



#110SS Flat Hummingbird w/
Flower - \$154
#110YG Flat Hummingbird w/
Flower - Call
1-1/4"W x 5/8"H x 1/4"D



#227SS Feather - \$220
#227YG Feather - Call
9/16"W x 1-1/2"H x 1/4"D



#228SS Fish Hook - \$154
#228YG Fish Hook - Call
5/8"W x 7/8"H x 1/4"D



#224PT-A Antique Rose w/ Pearl - \$120
#224PT Rose w/ Pearl - \$120
7/8"W x 1-1/8"H x 3/8"D



#156SS Rose - \$176
#156YG/WG Rose - Call
5/8"W x 5/8"H



#196GV Dogwood Blossom - \$208
#196SS Dogwood Blossom - \$186
#196YG/WG Dogwood Blossom - Call
1-1/4"W x 1-1/4"H x 3/8"D



#159GV Dove - \$198
#159SS Dove - \$186
#159YG/WG Dove - Call
5/8"W x 3/4"H



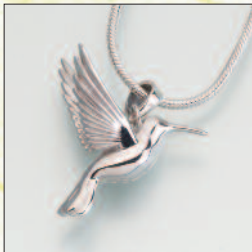
#197GV Conch Shell - \$186
#197SS Conch Shell - \$164
#197YG/WG Conch Shell - Call
5/8"W x 3/4"H



#167GV 4 Leaf Clover - \$198
#167SS 4 Leaf Clover - \$160
#167YG/WG 4 Leaf Clover - Call
5/8"W x 3/4"H



#205SS 4-chamber
Tree of Lives - \$296
205YG/WG 4-chamber Tree
of Lives - Call
1-1/4" Diameter x 1/4" Deep



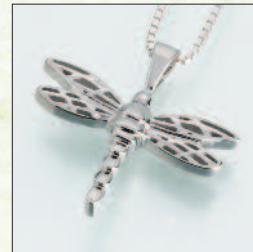
#215SS Hummingbird - \$132
#215YG/WG Hummingbird - Call
3/4"W x 1"H



#163GV Dragonfly - \$208
#163SS Dragonfly - \$176
#163YG/WG Dragonfly - Call
1-5/8"W x 1-1/4"H x 5/16"D



#162GV Dolphin - \$208
#162SS Dolphin - \$186
#162YG/WG Dolphin - Call
1-1/8"W x 1/2"H



#216SS Small Dragonfly - \$142
#216YG/WG Small Dragonfly - Call
1"W x 11/16"H



#157GV Turtle - \$198
#157SS Turtle - \$176
#157YG/WG Turtle - Call
3/4"W x 3/4"H



#129SS Butterfly - \$242
13/16"W x 11/16"H



#155BZ Acorn - \$100
#155GV Acorn - \$186
#155SS Acorn - \$164
1/2"W x 3/4"H



#154BZ Antique Maple Leaf - \$100
#154GV Maple Leaf - \$176
#154SS Maple Leaf - \$164
13/16"W x 1"H



#188PT Enameled
Satin Finish Green Leaf - \$100
5/8"W x 11/16"H



#183GV Fish (Ichthus) - \$164
#183SS Fish (Ichthus) - \$142
#183YG/WG Fish (Ichthus) - Call
3/8"W x 3/4"H

All items pictured not actual size. Measurements do not include the bales.
All chains and leather cord sold separately. Satin cord included with all orders.

Keepsake Pendants Filigree Collection

All items pictured not actual size. Measurements do not include the bales. All chains and leather cord sold separately. Satin cord included with all orders.



#220PT Heart w/ Filigree - \$120
#220PT-A Heart w/ Antique Filigree - \$120
3/4"W x 3/8"H x 3/16"D



#222PT-A Cross w/ Antique Filigree - \$120
#222PT Cross w/ Filigree - \$120
3/4"W x 11/16"H x 3/16"D



#148GV Antique Filigree Cross - \$208
#148SS Antique Filigree Cross - \$186
#148YG/WG Antiqued Filigree Cross - Call
5/8"W x 3/4"H x 1/4"D



#158GV Filigree Heart - \$198
#158SS Filigree Heart - \$186
#158YG/WG Filigree Heart - Call
5/8"W x 5/8"H



#161SK Heart w/Gold Inset - \$450
#161SS Heart w/Sterling Inset - \$208
#161YG/WG Heart w/Antique Inset - Call
13/16"W x 13/16"H



#127SS-A Glass Cylinder
Antique Filigree Casing - \$186



#127SS-C Glass Cylinder/
Filigree Casing - \$186
#127YG/WG Glass Cylinder/
Filigree Casing - Call
1/2" x 1-7/8"H



#190SS-A Small
Antique Filigree Cylinder - \$198
1/2"W x 1-1/8"H



#190SS-C Small Filigree
Cylinder - \$198
1/2"W x 1-1/8"H

Keepsake Pet Pendants



#203GV Celtic Cross - \$242
#203SS Celtic Cross - \$220
#203YG/WG Celtic Cross - Call
3/4"W x 1-3/16"H x 1/4" Deep



#160SS Filigree Round - \$242
#160YG/WG Filigree Round - Call
7/8"W x 7/8"H



#165GV Dog Bone - \$164
#165SS Dog Bone - \$142
#165YG/WG Dog Bone - Call
3/8"W x 3/4"H



#166GV Paw - \$176
#166SS Paw - \$154
#166YG/WG Paw - Call
5/8"W x 5/8"H

Keepsake Pendants Stainless Steel Sports Collection

24" Stainless Steel chains are included with each sport pendant.



#206ST Soccer Ball
w/ chain - \$170
1/2"W x 1/2"H



#210ST Golf Ball
w/ chain - \$170
1/2"W x 1/2 "H



#207ST Football
w/ chain - \$170
3/8"W x 5/8"H



#208ST Baseball
w/ chain - \$170
1/2"W x 1/2"H

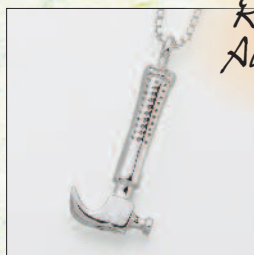


#209ST Basketball
w/ chain - \$170
1/2"W x 1/2"H

Keepsake Pendants Collection

All items pictured not actual size. Measurements do not include the bales.
All chains and leather cord sold separately. Satin cord included with all orders.

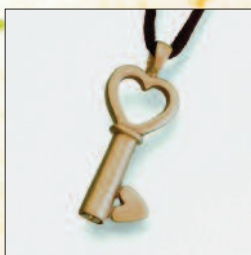
Recent Additions



#230SS Hammer - \$220
#230YG Hammer - Call
Head 5/8" W x 1-3/16" Long
Handle 3/16" Deep



#231SS Sun, Moon, Star - \$250
#231YG Sun, Moon, Star - Call
3/4" Circle x 1/4" Deep



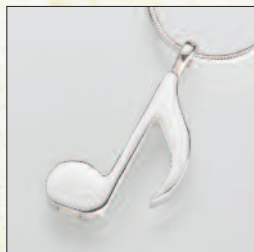
#218BZ Satin Finish
Key to My Heart - \$120
#218WB Satin Finish
Key to My Heart - \$120
5/8"W x 1-1/4"H



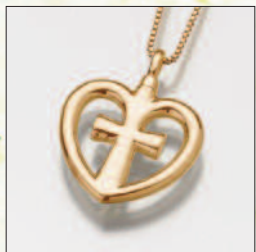
#219BZ/ST Bullet - \$120
7/16"W x 1-5/16"H



#217SS Anchor - \$198
#217YG/WG Anchor - Call
13/16"W x 3/4"H



#202GV Music Note - \$220
#202SS Music Note - \$210
#202YG/WG Music Note - Call
3/16"W x 1-3/8"H



#198GV Love Cross - \$208
#198SS Love Cross - \$186
#198YG/WG Love Cross - Call
1"W x 1"H x 3/16"D



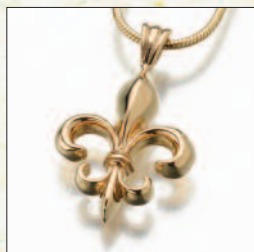
#184GV Puff Heart - \$242
#184SS Puff Heart - \$220
#184YG/WG Puff Heart - Call
13/16"W x 3/4"H



#186GV Italian Horn - \$176
#186SS Italian Horn - \$154
#186YG/WG Italian Horn - Call
3/16"W x 1-1/8"H



#200SS "Our" Glass - \$278
1/2"W x 15/16"H



#192GV Fleur de Lis - \$198
#192SS Fleur de Lis - \$176
#192YG/WG Fleur de Lis - Call
7/8"W x 1" H x 1/4" D



#195GV Remembrance
Ribbon - \$186
#195SS Remembrance
Ribbon - \$164
#195YG/WG Remembrance Ribbon - Call
7/16"W x 1"H x 3/16" D



#204SS Serenity - \$198
#204YG/WG Serenity - Call
3/4"Diameter x 1/4" Deep



#123BZ Antique Cherub - \$100
#123WB Antique Cherub - \$100
13/16"W x 3/4"H



#125BZ Antique Teddy Bear - \$100
#125WB Antique Teddy Bear - \$100
5/8"W x 3/4"H



#185GV Angel Wings - \$242
#185SS Angel Wings - \$220
#185SS-A Antiqued Angel Wings - \$220
#185YG/WG Angel Wings - Call
13/16"W x 1-3/16"H



187PT Enameled
Satin Finish Red Heart - \$100
11/16"W x 11/16"H



187PT-B Enameled
Satin Finish Black Heart - \$100
11/16"W x 11/16"H



#201PT Peace Sign - \$100
15/16"W x 15/16"H



#213GV Peace Sign - \$208
#213SS Peace Sign - \$176
#213YG/WG Peace Sign - Call
3/4"Diameter x 3/16"W

Keepsake Pendants Collection

All items pictured not actual size. Measurements do not include the bales.
All chains and leather cord sold separately. Satin cord included with all orders.



#180GV Eternity - \$264
#180SS Eternity - \$230
#180YG/WG Eternity - Call
1" Diameter Circle



#171GV Infinity - \$220
#171SS Infinity - \$198
#171YG/WG Infinity - Call
1/2"W x 7/8"H



#135SS Slide Rectangle - \$164
#135YG/WG Slide Rectangle - Call
1/2"W x 3/4"H x 1/4"D



#117BR Cylinder - \$100
#117SS Cylinder - \$186
#117YG/WG Cylinder - Call
1/4"W x 1-1/4"H



#115BR Small Urn - \$100
#115SS Small Urn - \$164
#115YG/WG Small Urn - Call
7/16"W x 11/16"H

**Double Chamber Option Available



#106SS Large Heart - \$230
1-5/16"W x 1-5/16"H



#107GV Small Heart - \$198
#107SS Small Heart - \$164
#107YG/WG Small Heart - Call
11/16"W x 11/16"H



#130SS Sliding Heart - \$154
#130YG/WG Sliding Heart - Call
5/8"W x 5/8"H x 3/16"D

**Double Chamber Option Available



#111PT Satin Finish Heart - \$100
15/16"W x 15/16"H



#111BZ Satin Finish Heart - \$100
15/16"W x 15/16"H



#119SK Heart w/ 14K
Star of David Inset - \$384
#119SS Star of David Heart- \$176
13/16"W x 13/16"H



#102GV Small Cross - \$186
#102SS Small Cross - \$154
#102YG/WG Small Cross - Call
9/16"W x 13/16"H



#101SS Large Cross - \$208
1-1/16"W x 1-1/2"H



#112PT Satin Finish Cross - \$100
7/8"W x 1-1/4"H



#114BZ Satin Finish Cross - \$100
5/8"W x 1"H



#121GV Slide Tear Drop - \$198
#121SS Slide Tear Drop - \$176
#121YG/WG Slide Tear Drop - Call
13/16"W x 7/8"H



#133SS Small Star - \$154
#133YG/WG Small Star - Call
3/4"W x 3/4"H



#116SS Large Round - \$230
1-1/8"W x 1-1/8"H x 1/2"D



#149WB Floral Heart - \$120
15/16"W x 15/16"H



#149BZ Floral Heart - \$120
15/16"W x 15/16"H

Titanium Necklace, Pendants and Bracelets Collection

Stainless Steel Pendants



#118TT Cylinder w/ Crystal Chip - \$330
5/16"W x 1-5/16"H
24" Titanium Chain Included



#136TT Long Narrow Sliding Rectangle - \$320
5/16"W x 1-5/16"H
24" Titanium Chain Included

#168TT
Necklace Pendant
\$400
1-1/4"L
24" Titanium Chain Included
(Modified Anchor Link)

Madelyn Company's Titanium Keepsake Pendants and Bracelets offer not only striking design, but amazing wearability for both men and women. As lightweight as they are lustrous, these beautiful pieces are crafted from highly durable titanium. Prized for its health benefits as well as its long-lasting beauty, titanium is stronger than steel yet surprisingly lightweight. Titanium is non-magnetic and hypo-allergenic, which makes this unique material ideal for everyday wear.

#164TT-L 9-7/8" Bracelet - \$430
#164TT-N Bracelet Narrow Band - \$430
7-1/2" long, Rollo link

#164TT-W Bracelet Long Wide Band - \$430
8-3/8" long, Rollo link

Measurements do not include the bales. Chain links are not adjustable.



#174ST Flask - \$430
11/16"W x 1"H
24" Stainless Steel Chain Included



#174ST-N Narrow Flask - \$430
1/2"W x 15/16"H
24" Stainless Steel Chain Included



#193ST Urn Pendant w/ Key Chain and 35" suede leather cording - \$150
9/16"W x 1-13/16"H

Keepsake Pendant Chains & Cording



- #139SS-18 Box Chain - 18" - \$56
- #139SS-24 Box Chain - 24" - \$70
- #139GF-18 Box Chain - 18" - \$72
- #139GV Box Chain - 24" - \$90
- #143SS Snake Chain - 20" - \$84
- #143GV Snake Chain - 20" - \$108



Leather Cording - 24" - \$4

All chains and leather cords sold separately, with the exception of Stainless Steel and Titanium pendants, which INCLUDE matching chains in the same metal.

Micro Lens Fillable Keepsake Pendants



#150BZ Heart w/ Lens - \$384
15/16"W x 15/16"H



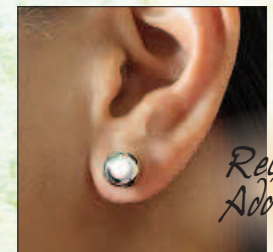
#151SS Large Cross w/ Lens - \$494
1-1/16"W x 1-1/2"H



Keepsake Bracelet and Earrings



#214SS Bangle Bracelet - \$308
#214YG/WG Bangle Bracelet - Call
Ball - 1/2" x 5/8"



#233SS Ball Earring (single) - \$90
#233SS Ball Earrings (pair) - \$180
#233YG Ball Earrings - Call
8mm Diameter

Hand-crafted lens magnifies image 160 times



www.madelynpendants.com
orders@madelynco.com
2811 Milton Ave., Suite 400
Janesville, WI 53545
1-800-788-0807
Fax 608-752-3683

Madelyn Co. is a wholesale company. We do not sell directly to the public.

To Our Valued Customer:

Madelyn Co. inspects each order for quality and individually wraps each item to ensure its safe arrival. As in the nature of hand-crafted goods, the finishes may vary from piece to piece. Some pendants have a high polished finish which may scratch easily, so please handle with care. Care cards are enclosed.

Madelyn Co. has a 100% guarantee policy on the quality and satisfaction of our product line. To maintain our guarantee, all pendants must be sealed with glue after filling. We are not liable for un-sealed, incorrectly glued pendants or lost pendants due to a broken chain.

Frequently Asked Questions

What is Gold Vermeil? Gold vermeil is 23K gold-plating over sterling silver.

Are the pendants waterproof after they've been sealed? We do not recommend submerging pendants in water after they are filled, this may weaken the bond. We are not responsible for replacing pendants that have lost their bond after being worn in water.

Do the pendants contain nickel? 14K white gold contains nickel, while brass, gold vermeil, sterling silver, and 14K yellow gold pendants do not. White bronze and yellow bronze pendants do not contain nickel, however the pewter items do contain a trace amount of nickel.

Are chains and cording included? Titanium pendants include titanium chains. Stainless steel pendants include stainless steel chains. Sterling silver, gold-filled chains and the leather cording (no clasp) are sold separately. We do not sell 14K chains. Black satin cording (without clasp) is included with pendants that do not include chains, for no additional charge.

What are gold-filled chains and why are they the next best thing to solid gold chains? Gold-filled wire is made from a solid gold tube filled with a metal alloy in combinations of brass, bronze and/or silver. Electroplating is NOT part of this process. Our 14 karat gold-filled is marked as 1/20 14K. Gold-filled chains, with reasonable care, will last a lifetime.

How do I care for my Keepsake Pendant jewelry? Frequent cleaning is recommended to maintain its true beauty. Salt water, chlorine in swimming pools, soap and perspiration take their toll on all fine jewelry. Wipe your jewelry carefully with a soft cloth to keep it clean and free of these elements which oxidize. Do not use harsh polish creams that may strip pendant of gold plating. Polish cream is included with silver and 14K gold pendants.

Are all pendants fillable? All pendants can be filled.

Are these pendants only for cremated remains? Our Keepsake Pendants are also designed to hold a lock of hair, dried ceremonial flowers, or soil from the burial site. Select pendants can also be personalized with engraving and hung empty in a display dome.

How long does shipping take? We ship via United States Postal Service (\$15.00 standard shipping) unless otherwise specified. UPS ground 4-5 business days is also available. Upon request, we can ship Next Day Air UPS, Next Day Early AM, 2-Day Air and Next Day Saturday. Charges for special shipping are according to distance and weight.